



163 Tancred St · Ashburton · New Zealand

03 307 6663

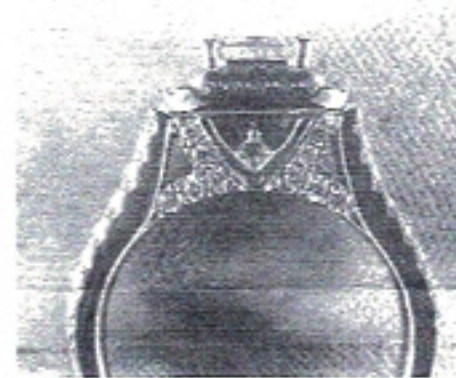
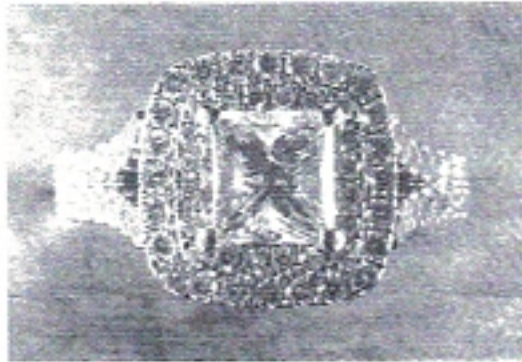
uniquejewellery@xtra.co.nz

www.uniquejewellery.co.nz

VALUATION FOR INSURANCE

30 July 2020

Valuation No. 3278, Page one



18ct white gold ninety seven (97) stone Diamond cluster engagement ring. Cast/stamped out components, hand assembled, set and finished. 4mm wide "D" shaped profile band, slight tapering to 2.4mm wide with split "V" swept up stone set shoulders to setting. Multi pave bead set shoulders, a total of thirty four (Sixteen per side) 0.025ct round modern brilliant cut Diamonds. Open "V" cut out sides and under bezel, each multi pave bead set with a total of twenty (Ten per side) 0.01ct round modern brilliant cut Diamonds (Each side missing a small blue square cut Sapphire). A raised (7.4mm high) triple tiered cushion shaped cluster setting, four claw set into the centre is one 1ct princess cut Diamond (I, SI2), surrounded on the next tier by a total of twenty 200 per carat round modern brilliant cut Diamonds (Each four bead pave set) and surrounded on the bottom tier by a total of twenty four 0.01ct round modern brilliant cut Diamonds (Each four bead pave set). Total Diamond weight approx 2.34ct. Total weight of the ring is 8.1 grams.

Replacement Valuation \$20,000.00

Adrian Waddell

Con't Page two.

The articles described above have been examined and the values given are an expression of our opinion. Gemstones have not been removed from setting(s) for assessment and all grades and weights have been estimated within the limitations imposed by setting(s). If a more precise assessment of the gemstone(s) is required they would need to be removed from the setting(s) so microscopic and other tests can be performed. This can be done with the owners permission at an additional charge. Whilst all care has been taken in making this valuation, no liability is accepted other than for any errors or omissions, including any liability to the person by reason of negligence. The values are noted in SNZ inclusive of GST based on current precious metal prices at the time of the valuation. This valuation is for insurance purposes only and is not to be used for resale purposes.